



L&T Construction & Mining Machinery

L&T 990HF

TANDEM COMPACTOR

Operating Weight: 10,000 kg
Frequency: 60/35Hz
Gross Power: 76 hp@2200 rpm
Engine: Ashok Leyland H4CTIC3N-BS III





Wide drum for better productivity

Higher frequency for best-in-class road surface finish

Patented vibration mechanism for superior performance

Fuel efficient ALH series BSIII Engine

High drum shell thickness for superior life



Auto vibration cut-off when machine is stationary to avoid scuffing

Side doors for enhanced Serviceability

**Best-in-class
operating weight delivers
better compaction in
lesser number of passes**

**Isolated operator
platform for better
operator comfort**

**Rotating operator station
improves edge visibility**

**Better illumination for
working during nights**

**Suspended frame
for better kerb
clearance**

**Wide angle
water spray
nozzle for lower
water usage**

**Low turning radius
for better
manoeuvrability**

**Efficient
filtration system
for better component life**



OPERATOR CABIN

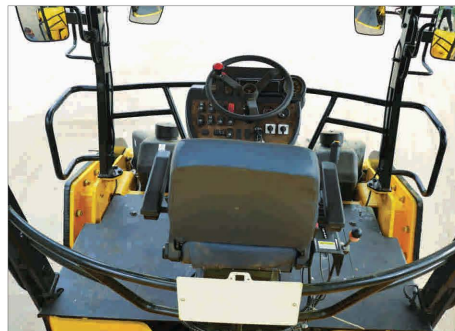
- ▶ Revolving operator station with 5-position lock
- ▶ Separate isolation for front console – steering wheel improves operator comfort
- ▶ Ergonomically-designed switches
- ▶ Glove box, mobile recharge point
- ▶ All switches are easily accessible, emergency stop button is provided
- ▶ Wide rear view mirror for more visibility



Better all round operator visibility



Clear drum edge visibility



PRODUCTIVITY

Soil Compaction	Sand & Gravel	Mixed Soil	
Compacted Lift thickness in mm	500	400	
Productivity in Cum/hour	250-500	200-400	
Bitumen	Wear Course	Binder Course	Base Course
Layer thickness in mm	20-40mm	60-80mm	100-140mm
Area output m ² /hour	1200-2100	700-1150	600-950
Productivity in Tonnes/hour	75-150	120-240	160-280

Site conditions will affect actual productivity

ENGINE

- ▶ Ashok Leyland 4 cylinder 4 Stroke Inline Turbocharged Inter cooled H series BSIII engine- water cooled
- ▶ Inline fuel injection pump
- ▶ Mud filter, Fuel filter and Water separator for better filtration
- ▶ Turbo pre-cleaner is a standard fitment



SUPERIOR SUSPENDED FRAME DESIGN

- ▶ Better kerb clearance for working at the road edges
- ▶ Better visibility of the drum edge
- ▶ Easy access to water sprinkling nozzles

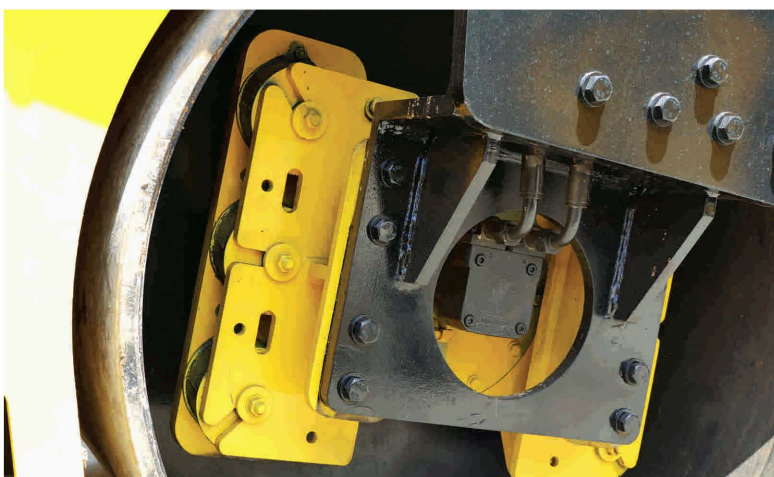
HIGH GRADEABILITY

- ▶ Capable of climbing 40% gradient
- ▶ High ground clearance
- ▶ Machine can work in hilly terrains and steep slopes



WORLD CLASS HYDRAULIC COMPONENTS

- ▶ "Closed circuit" hydraulic system with best-in-class hydraulic components
- ▶ Hydraulic System designed for optimising productivity

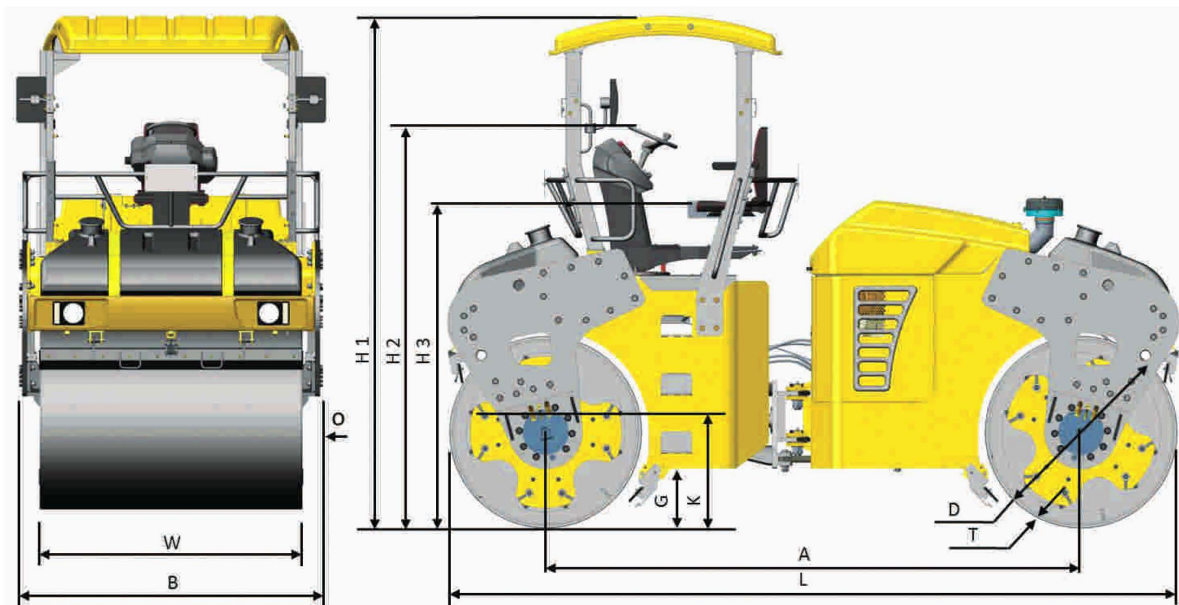


SERVICEABILITY

- ▶ Excellent air flow for better engine and hydraulic system cooling
- ▶ Openable top hood/ side doors
- ▶ Easy access for machine maintenance
- ▶ All refill points accessible from ground level
- ▶ Turbo Pre cleaner for better engine life



MACHINE DIMENSION



A	B	D	G	H1	H2	H3	K	L	O	T	w
3400	2000	1220	380	3250	2525	2075	700	4620	135	19	1730

SPECIFICATIONS

MACHINE WEIGHT	
Operating weight (kgs)	10000
Working weight (kgs)	10500
Static weight@ front/Rear drum (kgs)	5000 / 5000
Static Linear load Front/Rear (Kg/cm)	28.9 / 28.9

VIBRATION SYSTEM	
Vibration Stage	2
Frequency (Hz)	35/60
Amplitude (mm)	1/0.4
Centrifugal Force (kN)	78/77

DRUMS	
Width (mm)	1730
Diameter (mm)	1220
Shell thickness (mm)	19
Finish	Machined Drum with chamfered edges

TRAVEL	
Type	Infinitely variable hydrostatic drive with variable displacement pump
Drum Drive motors	Heavy-Duty Radial Piston Motors

MACHINE SPEED	
Working speed	6 KMPH
Travel speed	12 KMPH

GRADEABILITY	
Working Gradient	36%
Travel Gradient	40%

ENGINE	
Make	Ashok Leyland
Model	H4CTIC3N-BS III
Type	4 Stroke Inline Turbocharged Intercooled
Cylinder (nos)	4
Bore/Stroke (mm)	104x113
Displacement (L)	3.84
Fuel Injection	Direct injection, inline pump
Fuel	High Speed Diesel
Fuel filter Cum Water separator	Spin-on type
MudFilter	Cartridge Type
Aspiration	Turbocharged Intercooled
Air Filter	Dry Type with Dual Element
Engine oil filter	Cartridge Type
Cooling	Liquid
Engine Speeds (No loads)	Low 750 rpm High 2420 rpm
Horse power	(Gross)76 hp@2200 rpm as per ISO 1585
Torque (Max)	350 Nm @ 1460 rpm

WATER SYSTEM	
Type	Pressure spray drum wetting system with LLDPE water tanks
Pumps	Two Diaphragm water pumps
Spray Bars	2 : 4 Nozzles with 130° spray angle
Filtration	Triple filtration
Drum Wipers (per drum)	2
Water Tank Capacity	800 L (2 Tanks x 400 L)

MISCELLANEOUS	
Steering Angle	±37°
Turning Radius (inner) (m)	3.6
Drum Oscillation Angle	±10°

ELECTRICAL	
DC	12 V
Alternator	65A
Battery CCA	754 as per JIS (Max 900)

SERVICE CAPACITIES	
Fuel Tank	140 liters
Hydraulic Tank	90 liters
Engine Crank Case	9.5 liters
Engine Coolant	18 liters

BRAKES	
Service Brake	Dynamic hydrostatic through propulsion system
Parking Brake	Spring Applied Hydraulically Released (SAHR)

STANDARD EQUIPMENT	
● 19mm Drum Shell Thickness	
● Tilting engine hood & 2 side doors	
● Front & Rear work lamps	
● Swiveling operator station	
● Guard rail structure on operator platform	
● Mobile charging Point, Water bottle holder, Utility/Tool box	
● Weather proof rocker switches	

OPTIONAL EQUIPMENT	
● Track & Trace, machine health monitoring system	
● Intelligent compaction system	

WARNING ALARMS	
● Coolant overheat	● Low lube oil pressure
● Hydraulic oil filter clog	● Parking brake

INDICATORS	
● Travel mode	● Engine water temperature
● Battery charging	● Lube oil pressure
	● Parking brake

GAUGES	
● Lube Oil Pressure	● LCD hour Meter
● Engine Water Temp	● Fuel Level

32, Shivaji Marg, P.O. Box 6223
New Delhi 110 015
 Tel : (011) 41419555/59
 Fax : (011) 41419595/41419600

Larsen & Toubro Limited
 Aspire Towers
 Plot No: 55, 4th Floor
 Industrial Area Phase - 1
Chandigarh 160 002
 Tel: 0172 - 4646810 /846

Monarch Building
 D-236 & 237, Amrapali Marg
 Vaishali Nagar, **Jaipur** 302021
 Tel : (0141)4385911

Shree Ram Plaza, 2,3 & 4
 1st Floor, Siphon Chauraha
 Bedla Road-**Udaipur** 313 001
 Tel : (0294) 2451 337, 2451 305
 Fax : (0294) 2450 188

A-28 Indiranagar
 Faizabad Road, First Floor
Lucknow 226 016
 Tel : 0522- 2506472

3-B, Shakespeare Sarani,
 P.O.Box 619, **Kolkata** 700 071
 Tel : (033) 4400 2433/22831442
 Fax : (033) 2282 1025

Annapurna Complex
 Plot No. 559, Lewis Road
 Bhubaneshwar 751 014,
Orissa
 Tel : (0674) 2537 301, 2537 305/06
 Fax : (0674) 2537 309

P.O. Dhansar
Dhanbad 826 001
 Tel : (0326) 2291391/2291387

A1/11, Degaul Avenue
 Khoirasol, **Durgapur** 713 212
 Tel : (0343) 2559810 - 14,
 Fax : (0343) 2550693

Milanpur Road, Bamuni Maidan
Guwahati 781 021
 Tel : (0361) 2651 329, 2651 299
 Fax : (0361) 2551 308

Larsen & Toubro Ltd
 C/o: Golden Camp,
 Plot Number: 568 & 573
 Hazirabagh Road, Kokar Area
Ranchi, Jharkhand-834 001
 0651-2540237/2540418

Akashdeep Plaza, 2nd Floor,
 P.O. Golmuri, **Jamshedpur** 831 003
 Tel : (0657) 2340 829, 2487 112
 Fax : (0657) 234 1250

L&T-House, P.O.Box 119
 191/1, Dhole Patil Road
Pune 411 001
 Tel : (020) 66033483/480
 Fax : (020) 26114007

501, Sakar Complex
 Opp. Gandhigram Rly. Stn.
Ahmedabad 380 009
 Tel : (079) 66304017/18, 26582536
 Fax : (079) 2658 0491

North Block II, First Floor,
 Gate No.1, Powai Campus,
 Sakhi Vihar Road, Powai (W)
Mumbai 400 072
 Tel : (022) 67053285/67052470
 Fax : (022) 67051510

Radhadaya Complex
 Near Charodar Complex,
 Old Padra Road, **Vadodra** 390 015
 Tel : (0265) 2334 799
 Fax : (0265) 2336 184

12, Shivaji Marg
 North Ambazari Road,
Nagpur 440 010
 Tel : (0712) 6606441/2260025
 Fax : (0712) 2420618

131/1 Zone II
 Maharana Pratap Nagar,
Bhopal 462 011
 Tel : (0755) 4233913 / 914
 Fax : (0755) 2769264

Crystal Tower, IVth Floor
 G. E. Road, Telibandha
Raipur (CG) 492006
 Tel: 9752544407

II Floor, Vasantha Chambers
 5-10-173 Fateh Maidan Road
Hyderabad 500 004
 Tel : (040) 23230206/67015064
 Fax : (040) 2323 0686

L&T Construction Campus
 TC-1 Building, 2nd Floor,
 Mount Poonamallee Road,
 Manapakkam, **Chennai** 600 089
 Tel: (044) 2270 6800/ 6868
 Fax: (044) 2270 6930

Post Bag 7156
 67, Appuswamy Road
Coimbatore 641 045
 Tel : (0422) 2588135/2588105
 Fax : (0422) 2588148

40-5-6-1 First Floor, Tickle Road
 Near Sweet (Magic)
 Brindavan Colony
Vijayawada 520 010
 Tel : (0866) 2470856, 5527056,
 5567056, 2482436
 Fax: (0866) 2485274

38, Cubbon Road
Bengaluru 560 001
 Tel : (080) 25020139
 Fax : (080) 25585214/25596397

Skybright Building, M.G. Road,
 Ravipuram Junction, P.O.Box 1723,
 Ernakulam, **Kochi** 682 016
 Tel : (0484) 2358686
 Fax : (0484) 2358982



Marketed & Serviced by:

L&T Construction Equipment

Larsen & Toubro Limited

1st Floor Lakshminarayan Complex, 10/1 Palace Road, Bengaluru- 560 052
 Tel: (080) 22256982/83/84, 40401700 Fax: (080) 22250309
 E-mail: ceb@larsentoubro.com www.larsentoubro.com

Zonal Offices:

Delhi (011) 4141 9555/59
Nagpur (0712) 6606441/2260025

Kolkata (033) 44002433/22831442
Hyderabad (040) 23230206/67015064

Pune (020) 66033483/480
Bengaluru (080) 2502 0131/39

CIN: L99999MH1946PLC004768

Product improvement is a continuous process. Specifications given in this publication are therefore subject to change without notice.
 Photographs depicted may be of optional equipment.